

**LOD** BRASIL  
LINKED OPEN DATA

19a21 novembro 2014

---

# PAINEL: Desafios de P&D e Cenários em dados abertos ligados

Sandro Rautenberg, [srautenberg@unicentro.br](mailto:srautenberg@unicentro.br)

Pós-Doutorando/Universidade de Leipzig

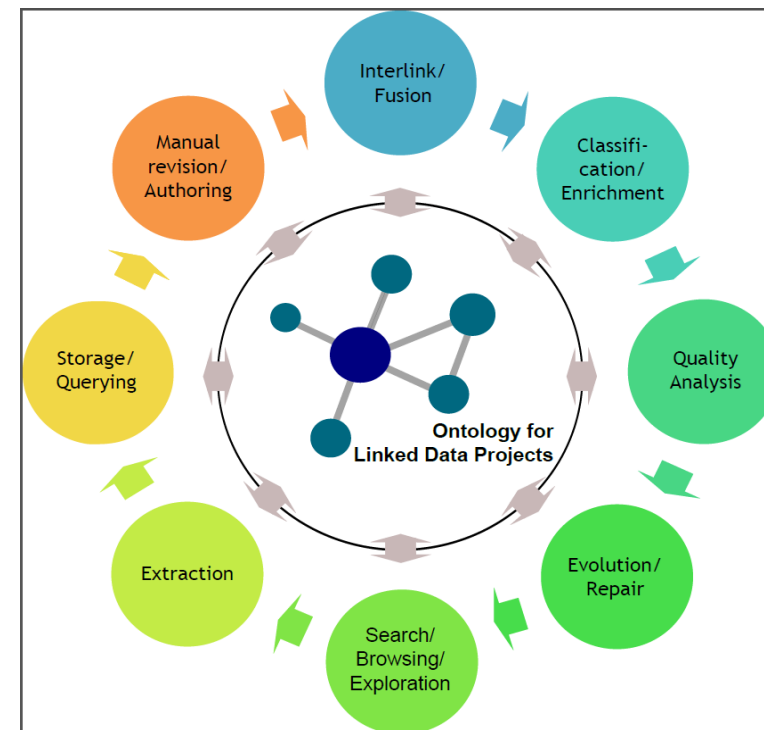
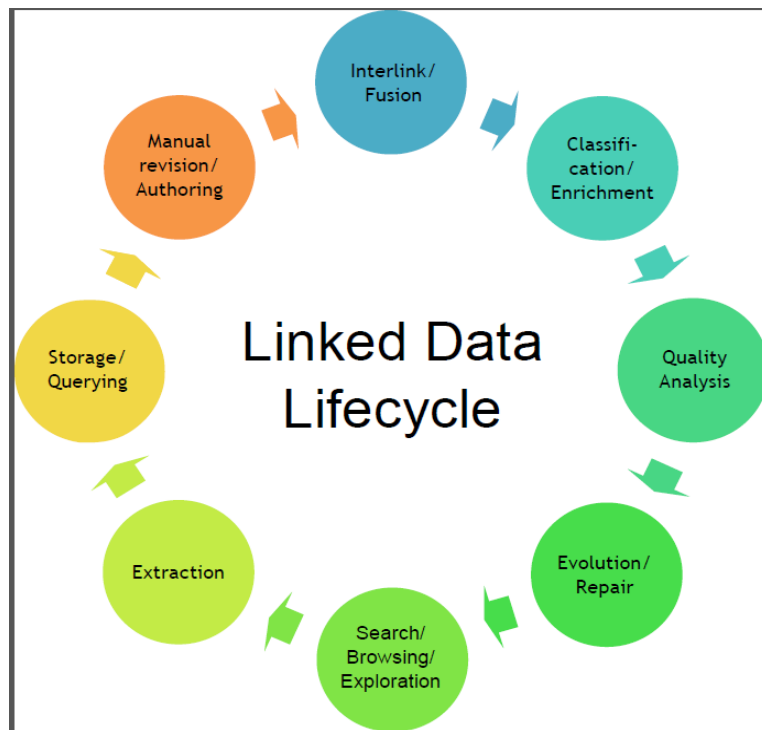
Bolsista Ciência Sem Fronteiras

Modelo de conhecimento para desenvolvimento de aplicações *Linked Open Data* baseado em ontologias

(Processo nº 18228/12-7)

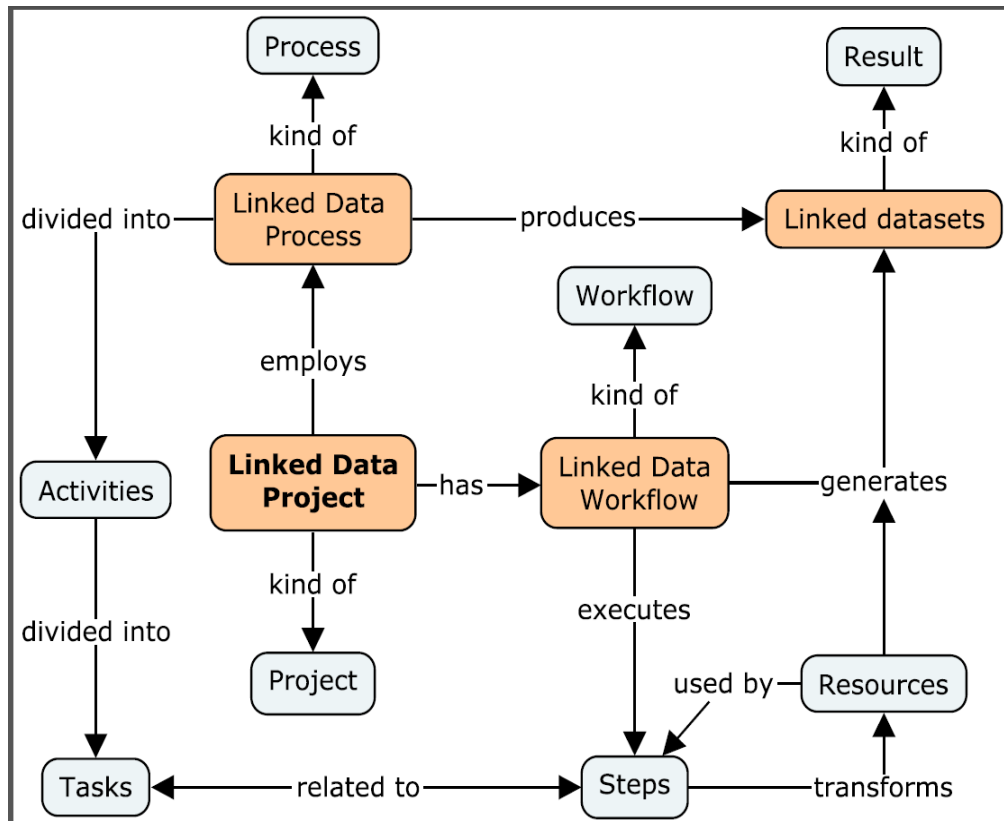
# Pergunta norteadora

Quais os principais desafios de pesquisa na área de LOD no Brasil e no mundo?



# Pergunta norteadora

Quais os principais desafios de desenvolvimento de repositórios e aplicações LOD no Brasil?



```
1) PROJECT'S IDENTIFICATION
1.1) Name: QualisBrasil Project
1.2) Homepage: http://lod.unicentro.br/QualisBrasil/
1.3) Creator: Sandro Rautenberg
1.4) Goal(s)
Offering Qualis Periodical Index according to the principles Linked Open Data.

1.5) Description
QualisBrasil is part of http://lod.unicentro.br endpoint. It aims to aid researches to collect linked open data about Qualis Periodicals Index to execute bibliometric or scientometric studies. Available data: Periodical (ISSN, Name), Knowledge Field (id, Name), Qualis Index, and Year.

2) WORKFLOW
2.1) Name: workflow_qualisbrasil2005
2.2) Short description
Workflow applied to create linked dataset of Brazilian Qualis Index (year 2005).

2.3) Steps
2.3.1) step_extracting_qualisbrasil2005_from_legacy_system
Contributor: Sandro Rautenberg
Stage: Extraction
Performed at: 2014-11-06 00:00:00

Input Datasets:
- dataset_lodprojectfinal20141106_1325_sql
  (File format: SQL Format)
  (Location: D:\LODPROJECTS\QUALISBRASIL\DATASETS)
  (License: No license defined)

Output Dataset:
- dataset_qualisbrasil_csv
  (File format: CSV Format)
  (Location: D:\LODPROJECTS\QUALISBRASIL\DATASETS)
  (License: No license defined)

Parameters and parameter's values:
- [parameter_year : 2005]

Used tool: MySQL.

Short description:
- Restored the database in a mysql prompt (see input datasets).
- Ran the sql query (see script).
- Saved a CSV file as output dataset (see output dataset).

Script:
SELECT ... FROM ... WHERE ...

2.1.2) step_converting_qualisbrasil2005_csv_to_rdf
...

2.1.3) step_generating_qualisbrasil2005_rdf
...

2.1.4) step_storing_qualisbrasil2005_rdf
...
```

# Pergunta norteadora

Quais os cenários possíveis para utilização de LOD nos próximos anos?

Figura 1 – Cenários de utilização do modelo proposto



Fonte: elaborado pelos autores.

 Search

Hosted by

UNIVERSITÄT LEIPZIG



Funded by



DAAD DFG

### News

**AKSW Colloquium "Towards an Open Question Answering Architecture" conference pre-presentation on Monday, August 18 in P702**  
about a month ago by Konrad Höffner

Towards an Open Question Answering Architecture On Monday, August 18 ,13.30, Edgard Marx, will give a pre-presentation of his Semantics' conference talk about the accepted paper Towards an Open Question Answering

### current funded projects

- ART-e-FACT
- BIG
- BioASQ
- Electronic Resource Management
- GeoKnow
- GOLD
- LinkingLOD
- LOD2

### featured projects

- Catalogus Professorum
- DBpedia
- DBpedia SPARQL Benchmark





# LOD BRASIL

## LINKED OPEN DATA

19a21 novembro 2014

Realização



UNIVERSIDADE FEDERAL  
DE SANTA CATARINA



INSTITUTO FEDERAL  
SANTA CATARINA

Apoio

